



THE CENTURION SMOKEBOX

"Providing smoking news and steaming interests to members and friends"

Centurion Society of Model Engineers

Kwikkie Crescent 999
Centurion Lake Ext 1
Zwartkop

 www.centuriontrains.com
 info@centuriontrains.com
 **Centurion Society of Model Engineers**
& Centurion Society of Model Engineers' Supporters Group

CSME NEWSLETTER FEBRUARY 2024

COMMITTEE

Chairman - Leon Kamffer	082 577 7813	e-mail: lkamffer@mweb.co.za
Vice chair. - John O'Mahony	082 809 3595	e-mail: omahony236@gmail.com
Treasurer - Ballot Marx	082 808 5783	e-mail: ballotmarx@gmail.com
Secretary - Norman Reyneke	082 553 7344	e-mail: admin@centuriontrains.com
Committee - Carel Janse van Rensburg	076 774 9221	e-mail: kgtmodelbouery@gmail.com
Committee - Francois Hanekom	083 448 2639	e-mail: c.f.hanekom@gmail.com
Committee - Neil Webb	083 243 0701	e-mail: neilwebb52@gmail.com

Non-committee person contacts

Caretaker - Johan Swanepoel	064 520 8572	e-mail: swanepoel24.js@gmail.com
Facebook - Norman Reyneke	082 553 7344	e-mail: admin@centuriontrains.com
Alarm & Website - Norman Reyneke	082 553 7344	e-mail: admin@centuriontrains.com
Newsletter - Carel Janse van Rensburg	076 774 9221	e-mail: kgtmodelbouery@gmail.com

2023 SUBS: R500 FOR ORDINARY MEMBERS R250 FOR SENIOR MEMBERS AND STUDENTS

Official Correspondence & Newsletter

If you read this and are not receiving mail from the CSME you should contact the secretary or editor to update your details. Please ensure we are notified of any change of email address and cell phone number. Those members without email can collect a copy of the newsletter on request from the clubhouse on track day. The news letters are also distributed via the official CSME Whatsapp group.

Next Club Meetings

The Annual General Meeting is on Saturday, 17 February 2024, and club track day on Sunday, 18 February 2024.

Members are welcome any other time by arrangement with Swannie 064 520 8572. The gates are operational by cell phone for members. Members, please contact Norman Reyneke to be added to the gate motor list.

Chairman's Chatter

We finished the bridge on the outer loop and started using the long track. We had a few derailments, mostly empty trucks but after extensive measuring we realised that the track gauge on the first curve was impacted when we adjusted the radius of the curve. We decided to use the short track till we can fix the problematic area. We grinded open the one track, plan to adjust and re-grout.

Attendance was good in February, but last running day was cloudy and cool which usually impact our visitor numbers. Thanks to the regular drives for their efforts. We appreciate it.

We started on the inner track, moved the concrete track bed so it is ready for installation. We are ready to install, and thinking of arranging a large working party on the March club Saturday, please look out for the announcement on the club channels. The more hands the merrier. We have all the materials, except all the track steel, and will obtain material as soon as we are ready to start.

It is the AGM club Saturday, please attend and contribute. See you there.

Secretary's Bit

A reminder to all members, that our Annual General Meeting shall take place on Saturday 17 February 2024, at 14h00, in the Clubhouse. All members are free to attend, but only fully paid-up members are allowed to vote.

Subs for 2024 remain unchanged: Full members (Employed) R500.00, Retired and Junior Members: R250.00.

Please note that, the long track remains closed for running, for safety reasons, as some changes need to be made to the new track curve to the swing bridge.

Our February birthday: Hanno Louw. We wish him all the best for another trip around the sun.

From the Editor

Thank you very much for all the contributions for this edition of **THE CENTURION SMOKEBOX**.

This month, a new feature; **REPORT BACK FROM TRAVELLING MEMBERS**. If any of our members travel locally and/or aboard and visit other clubs or interesting sites and places, please take pictures with a short descriptions/write-up and send to me for sharing with fellow members.

Please continue to send any activities you see, or are busy with on your computer in planning, workshop in machining and assembling, or testing at the club. We need contributions every month!

If you have any material, tools, parts or projects for sale, please share and we will do our best to get parts used and projects revived or locos running again. Contributions to the **SELL / SWOP / WANTED** is what assist to keep the hobby alive, and might just convince a potential new model engineer to get going!

CSME ANNUAL GENERAL MEETING

AGENDA FOR ANNUAL GENERAL MEETING OF THE CENTURION SOCIETY OF MODEL ENGINEERS HELD AT CLUBHOUSE ON 17 FEBRUARY 2024 AT 14H00

1. WELCOME

2. APOLOGIES

3. MINUTES OF PREVIOUS MEETING

4. CHAIRMAN'S REPORT

5. TREASURER'S REPORT

6. ELECTION OF COMMITTEE

7. ANNUAL SUBSCRIPTIONS

8. NEW MEMBERS

9. GENERAL

10. CLOSING

Report Back from Travelling Members

Bakana Railways.... Only if you are a resident or a regular holiday maker at the town of Cannon Rocks would this name ring a bell. This +/-100 m 5 inch track is owned by Rossouw and Karen Engels and it encircles their holiday home at Cannon Rocks.

For the last 10 years Rossouw has been using a 10 Class locomotive built by the late Blaar Coetzee and Lukas Nel (CSME). Although this locomotive is about 40 years old she still chucks along like a young filly. Testimony to the great work done by the 2 builders and the loving care of the owner.

Every Christmas holiday Rossouw offers free rides to the residents and holiday makers from Cannon Rocks and neighbouring towns. This has really become a tradition in Cannon Rocks.

During December 2023 a second steam engine joined the 10 Class and double the amount of fun was had. This delightful little Super Simplex was the first ever locomotive built by Leon Kamffer, chairman of CSME. This locomotive also transported her share of passengers and didn't stand back for the bigger 10 Class. Although this little railway cannot compete with the bigger clubs it surely is the best in Cannon Rocks and ready to steam of into the future.

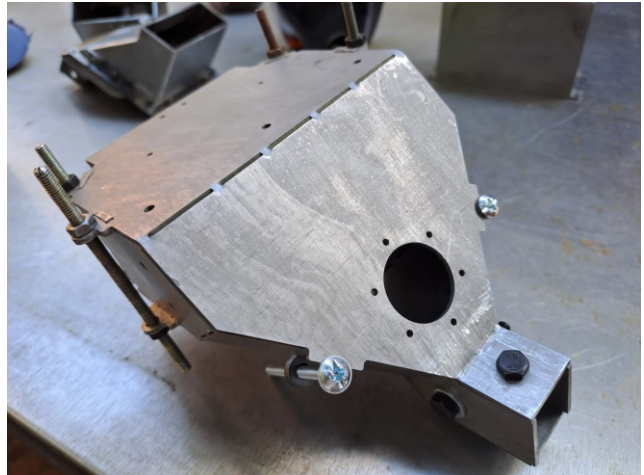
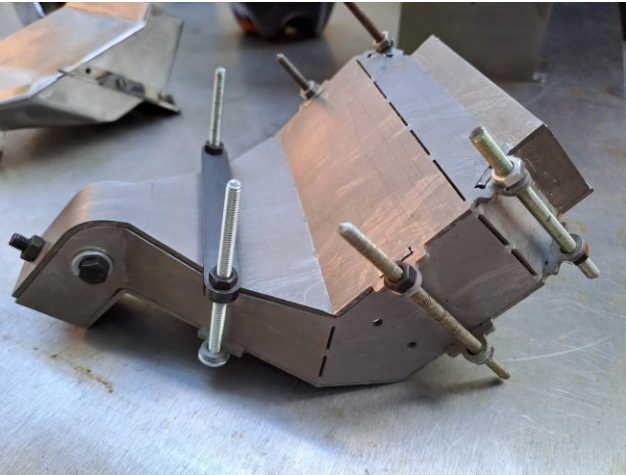
By Francois Hannekom



Report Back from Travelling Members



Who's doing what?



Johnny Sharpe sharing some very interesting construction progress on his 7 1/4 inch 19D.



Trailing truck axle box covers above for the 7 1/4 inch 19D designed on F360 and lost wax casting in brass for the CG1, 1:24 scale 15F builds by Carel Janse van Rensburg.



Who's doing What

The enlarged "culvert" with the new bridge is completed. Well done to the bridge builders.



OTHER NEWS from CSME!



LAND INVASION



It has come to the attention of those, with a fine eye for observation, that a certain section of MEERPARK has been hit with a land invasion!

It however, appears the invaders are very quite, does not make a racket at night (or during the day), and are willing to contribute to the aesthetics of the specific area of occupation.

If any members have similar invaders not welcome in their current garden anymore, please drop them at the station, and we will make sure they get land allocated to them under the CSME Gnomesville Land Distribution Project!



Sell / Swop / Wanted pages

Michael have this PANSY chassis for sale.
Running well on air
R10,000 neg.
Contact Michael Eykelhof at 072 107 4988

