



THE CENTURION SMOKEBOX

"Providing smoking news and steaming interests to members and friends"

Centurion Society of Model Engineers

Kwikkie Crescent 999
Centurion Lake Ext 1 (Zwartkop)
PO Box 16023
Lyttelton, 0140



www.centuriontrains.com

csmetrains@gmail.com

[https://www.facebook.com/pages/-](https://www.facebook.com/pages/-SocietyofModelEngineers/420612321335973?ref=hl)

[SocietyofModelEngineers/420612321335973?ref=hl](https://www.facebook.com/pages/-SocietyofModelEngineers/420612321335973?ref=hl)

GPS 25° 51.066'S 28° 10.971' E

No responsibility is taken by the CSME for any subject matter in this newsletter other than official Society notices.

CSME NEWSLETTER MAY 2021

COMMITTEE

Chairman – Leon Kamffer
Vice chair. – John O'Mahony
Treasurer – Ballot Marx
Secretary – Imogene Groothuijzen
Committee – Jon Shaw
Committee – Carel JanseVrensburg
Safety – Norman Reyneke
Non-committee person contacts

Caretaker – Johan Swanepoel
Caretaker – Johan Swanepoel
Facebook – Norman Reyneke
Alarm system & Website – Norman Reyneke
Newsletter – Jon Shaw

(082-577-7813) email: lkamffer@mweb.co.za
(082 809-3595) email: john.o@telkomsa.net
(082-808-5783) email: ballotmarx@gmail.com
(082 484 4237) email: imogenegroothuijzen@gmail.com
(072 437 0710) email: ionsamshaw@gmail.com
(076 774 9221) email: carel@angohygiene.com
(082-553-7344) email: fangrj@telkomsa.net

(012 643 0750) Phone and fax
(071 619 1644) email: swanepoel24.js@gmail.com
(082-553-7344) email: fangrj@telkomsa.net
(082-553-7344) email: fangrj@telkomsa.net
(072 437 0710) email: ionsamshaw@gmail.com

Membership Fees for 2021 are unchanged from 2019/20

2021 SUBS R400 FOR ORDINARY MEMBERS R200 FOR SENIORS & STUDENTS

Bank details for any payments to CSME.

For any payments, please email details of payment to Ballot Marx at csmetrains@gmail.com or ballotmarx@gmail.com

Bank Details are as follows:

Bank: First National
Branch: Centurion, code 26-15-50
Account Name: Centurion Society of Model Engineers
Account No: **62060752906**
Reference: **Your Full Name/ subs 2021 (or what payment is for).**

Note the account number change in red

Official correspondence and newsletter

If you are not receiving mail from the CSME you should contact the secretary or editor to update your details. Please ensure we are notified of any change of email address.

Those members without email can collect a copy of the newsletter from the clubhouse on track day.

Next Club Meetings

This month the 15th & 16th of May will be the member's weekend. Members are welcome any other time by arrangement with Swannie 012 643 0750, or 071 619 1644. The gates are again operational by cellphone.

Chairman's comments.

April was a particularly good month, beautiful weather every running day, and all the running days were well attended by the public. We managed to build some reserves, but we do not know what may happen as there is already talk of a third Covid wave.

The regular drivers did a splendid job with a variety of locomotives out. Our steam locomotives also work hard, Lizzy got some attention, and the Garret is out for repairs to the boiler main steam pipe.

We managed to complete the track from the station to the elevated storage to the stage that it can be used. Everyone that helped over the year with the new projects is invited to come and braai on Saturday before club day, (12h00 15th May) it was a massive project made possible by lots of help over the year. My personal thanks to every person that contributed, it would not have been possible without every little bit of help.

At this stage we can start spending our efforts on other overdue tasks. We raised the shelves in the library, and plan to relocate our storage containers to have better storage for our lawnmowers.

Since it is impossible to plan large events as we are not sure what the lockdown situation will be going forward, various clubs have decided to at least arrange members events. RSME plan an event beginning September, Pietermaritzburg plan an event beginning August, and we will definitely plan an event in our September fair timeslot (last weekend of September). The 45mm group also plan an event in June. We have large open premises, so members can adhere to Covid guidelines and enjoy our hobby.

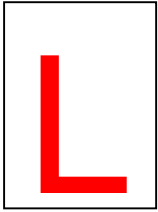
Michael brought along his new up scaled Simplex for a test run and to sort out some initial teething problems. Well done, Michael. Hope to see a few other projects getting closer to steam up or first day on the track.

Leon



Photo's courtesy Leon Kamffer.

Secretary's Bit



Quite recently I came across a 2009 Newsletter when Alex was still editor. His topic was cowcatchers. Now bear with me. He has decided that I should learn to drive his (non-steam) loco's as they are just standing there gathering dust. So, during a quiet moment last Saturday afternoon I duly took the tram (dubbed "dingetjie" by the kids) around the track. Rather fun and no mishaps. Sunday morning early saw me doing the round with the Galloping Goose (Reo truck) as it was decided that this should be my designated train. Off I went, all by my lonesome self. All went well until I hit a piece of track covered with wet leaves which bogged me down solidly! After scratching out leaves from the front, middle and back I still could not get going. Alex came looking for me and we managed it together. Lesson learnt! But I was thinking, if the train now had a cow (or leaf) catcher.....

Birthday wishes go to Kevin Mey and Derek Louw.

Imogene Groothuijzen

Track and grounds.

The rainy season growth is now fairly well under control and attention is now focussed on other work. The leaf composting area is being dug out, compost removed, and being used in the gardens and for potting of new tree saplings, and plants. Soil is being spread alongside track edges to level the adjacent ground to track height to make trackside grass cutting easier.

We will be attempting to compost the water hyacinth to make use of the nuisance!

Work on the new line itself, from the new storage to the station is finished. The associated concreting and paving is almost finished with the surrounding area being rehabilitated. Some sort of plants will be planted as well. The west lake just outside our premises is still totally covered by the water hyacinth and the other ponds are becoming stagnant due to lack of inflow. The boat club lake is being aerated by the fountain so is in the best condition of the lot. Our labourers are keeping the water hyacinth under control in the east lake.

Tuesday and Saturday Gangs

Site maintenance machinery is the priority each Tuesday with something always requiring maintenance and repair. Lizzie is undergoing a tidy up and should be back in service soon. As usual the lawn mowers required some maintenance each week as did the backpack blower and brush cutters. We did however get round to painting and some assembly of the new driving cars and parts designed, and laser cut by Leon. These will now be seen in service. Every week, Lizzie gets maintenance and necessary repairs, Dennis and Trompie have both required attention. The electric Loco's also need attention but not as much as the other Loco's. those big batteries drink distilled water like a fish, so levels need a constant watch. After each run, they go back to the shed and are put on automatic chargers that replenish the charge then keep them on a maintenance cycle ready for instant use. The duty electric (of which we have 3) is also used with the goods wagon as an electric oversize wheelbarrow during the week for all sorts of work around our long track. We even got round to painting and numbering the point lever cover levers! Thanks Hudson. Tuesday Gang never have to look for work, and never have an idle Tuesday! The gang members never wait to be allocated jobs they always seem to notice or are aware of something and get on with it. This last Tuesday after continuous derailing of the maintenance truck, (also causing loco derailment,) at a certain set of points exasperation took over and the truck and points underwent maintenance. It certainly is no fun having to get out the loco rerailing equipment and put it back on the track. The rerailing procedure for our locos is not scaled down from full size in proportion with the loco's scale! Saturday Gang this month will be more of a social nature as we have the storage roof wetting braai (barbecue for non- South Africans)

Commercials

CSME are in need of 2 steel drums 220 Litre if you know of any going begging in Pretoria please let a committee member know to arrange collection.

Member's home progress

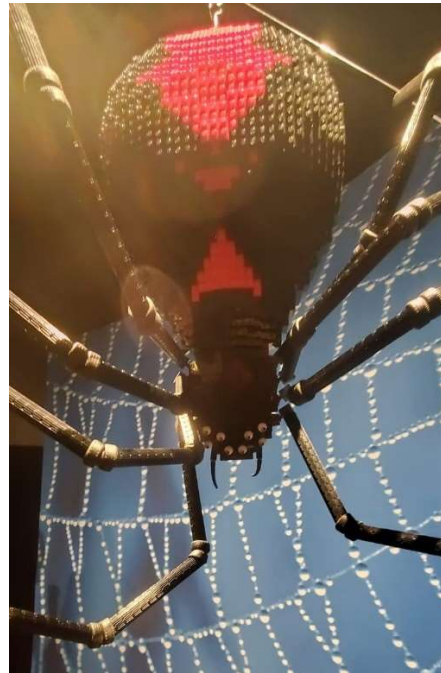
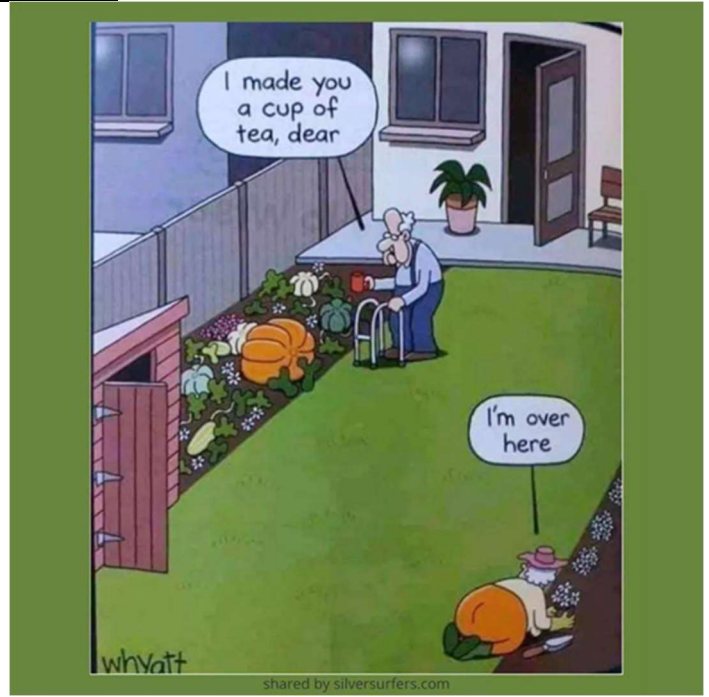
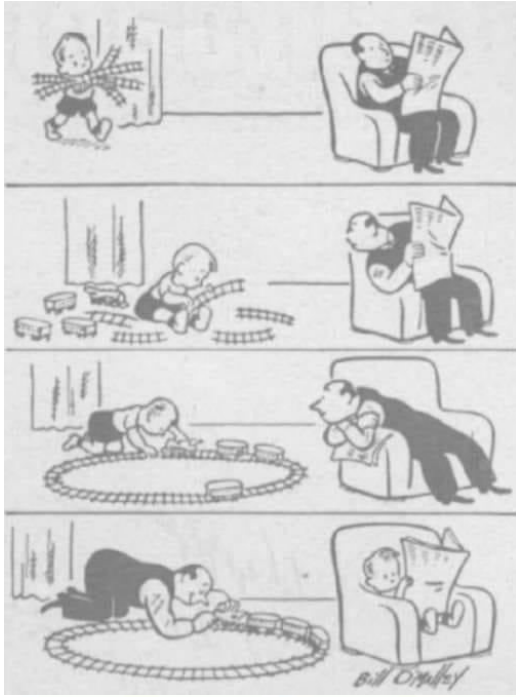


Johnny Sharpe's progress on the cylinders for his 7¼" Shay



Photo's courtesy of Lizchen Welthagen a visiting wildlife photographer.

Funnies



More New Zealand Lego

