

THE CENTURION SMOKEBOX



"Providing smoking news and steaming interests to members and friends"

Centurion Society of Model Engineers

Kwikkie Crescent 999
Centurion Lake Ext 1
Zwartkop

 www.centuriontrains.com

 info@centuriontrains.com

 **Centurion Society of Model Engineers**
& Centurion Society of Model Engineers' Supporters Group

CSME NEWSLETTER APRIL 2025

COMMITTEE

Chairman - Leon Kamffer	082 577 7813
Vice chair. - John O'Mahony	082 809 3595
Treasurer - Ballot Marx	082 808 5783
Secretary - Norman Reyneke	082 553 7344
Committee - Carel Janse van Rensburg	076 774 9221
Committee - Francois Hanekom	083 448 2639
Committee - Neil Webb	083 243 0701
Committee - Roko Popich	078 401 2927

e-mail: lkamffer@mweb.co.za
e-mail: omahony236@gmail.com
e-mail: ballotmarx@gmail.com
e-mail: admin@centuriontrains.com
e-mail: kgmodelbouery@gmail.com
e-mail: c.f.hanekom@gmail.com
e-mail: neilwebb52@gmail.com
e-mail: popichfam@gmail.com

Non-committee person contacts

Caretaker - Johan Swanepoel	064 520 8572
Facebook - Norman Reyneke	082 553 7344
Alarm & Website - Norman Reyneke	082 553 7344
Newsletter - Carel Janse van Rensburg	076 774 9221

e-mail: swanepoel24.js@gmail.com
e-mail: admin@centuriontrains.com
e-mail: admin@centuriontrains.com
e-mail: kgmodelbouery@gmail.com

2025 SUBS: R500 FOR ORDINARY MEMBERS R250 FOR SENIOR MEMBERS AND STUDENTS

Official Correspondence & Newsletter

If you read this and are not receiving mail from the CSME you should contact the secretary or editor to update your details. Please ensure we are notified of any change of email address and cell phone number. Those members without email can collect a copy of the newsletter on request from the clubhouse on track day. The news letters are also distributed via the official CSME Whatsapp group.

Next Club Meetings

The committee meeting is on Saturday, 19 April 2025, the club running day is 20 April 2025. We are also open to the public on Monday 21 April 2025.

Members are welcome any other time by arrangement with Swannie 064 520 8572. The gates are operational by cell phone for members. Members, please contact Norman Reyneke to be added to the gate motor list.

Chairman's Chatter

A very successful SAR locomotive weekend, amazing how many of the smaller locomotives is out there. Public attendance was also beyond expectations.

The Saturday members only day was very well supported, and lots of activity and locos out. It was very rewarding to see people enjoy our facilities.

A very big thanks to everyone that assisted with driving, passenger control, and just helping all over, it just kept things moving and incident free.

We worked on the raised track again, and the Tuesday gang were very busy doing repairs on Trompie, Barry and the inner track.

We have a new lowbed truck in construction ,so lots to do Saturday as we also plan to work on the raised track again. Please join us.

Leon

Secretary's Bit

My thanks go out to all the members who responded to the e-mailed details update form. This turned out to be a very worthwhile exercise. However, there are still members who have not returned their forms. Please do so as soon as possible. There are also members, who do not have relevant e-mail addresses anymore, consequently we are unable to contact you.

Printed copies of the relevant form will be available at the Club office as from the Easter Weekend. Please pop in and complete a form when next you visit the club.

Birthday wishes go out this month to: Paul Burnett, Francois Hanekom, James Cunningham and Raymond Oosthuizen.

Norman

From the Editor

Thank you very much for all the contributions to this edition on **THE CENTURION SMOKE BOX**.

The SAR/SAS get together was very well supported from all over. The clubhouse, steam bay and station was a hive of activities, displays and discussions. We most certainly had the most number of locomotives as well as the most number of different scales of locomotives (N, HO, CGHO, OO, On30, O, G, CG1, 16mm, 2 1/2, 3 1/2, 5 and 7 1/4) on site in the club's history.

WE ARE CLAIMING IT TO BE A WORLD RECORD: The most number of locomotives representing the South African Railways at a ME Society over one weekend. Each of the 380 locos displayed was photographed.

We thank each and every person, as well as each and every ME Society, as well as Model Railway clubs who joined and supported this great event.

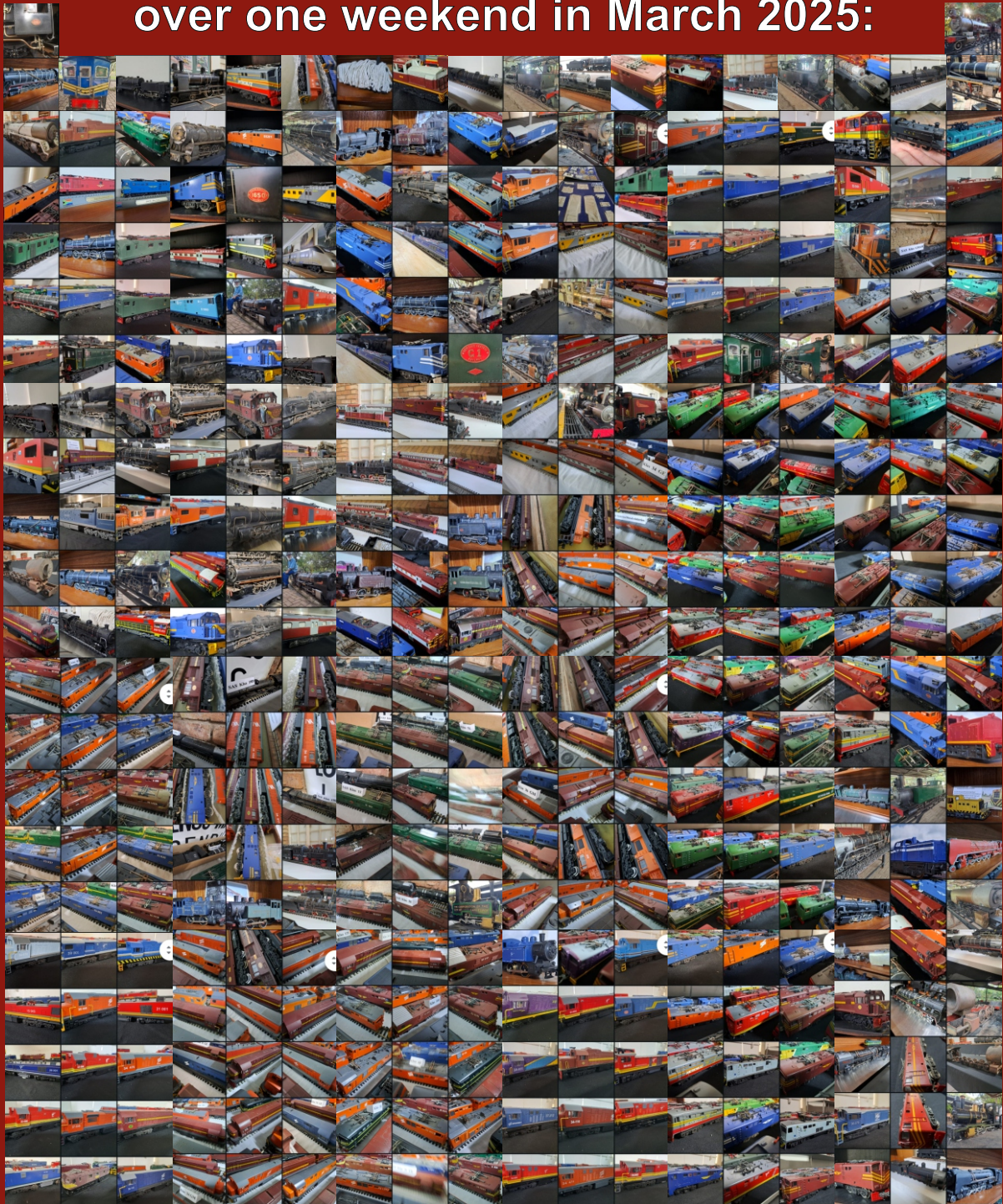
Another great WORKSHOP GADGET by Leon.

Geat items for sale in this month's **SELL/SWOP/WANTED** section.

Carel



380 locomotives representing the South African Railways at CSME's Meerpark Station over one weekend in March 2025:



Workshop Gadgets - Leon Kamffer



Quick Divider for use in Vice

A lot of times one wants to quickly mill 2 opposing flats on a part, or make a fitting where one want to drill 2 holes 90 degrees apart.

It is always possible to set up a dividing head, or a rotary table vertically for larger or special number of divisions. Setup time can be a large portion of the total time making a simple part, or it can even take longer to set up than to mill or drill the few parts. Dividing with the worm takes a lot of turns to turn the dividing head or table 180 degrees. They do not always have a quick release dividing option.

One needs a quick divider that one can drop into the vice already on the milling machine table. One can buy a few versions, not always available or affordable or made to fit a vice.

It is easy to make one, using a square piece of material, Aluminum makes it lightweight to handle. Bore for tapered bearings from both sides, make a spindle for a collet that you already own, like 5C or ER. End covers with simple gap seals are adequate. A dividing plate and spring-loaded detent with 12 holes allow for easy divisions of 2, 3, 4, and 6. If one uses an accurate size square with your spindle in the middle or known measurement from the side, when you use it in a vice after you zeroed your DRO against the jaw, one can accurately drill holes where they need to be as the center is known.

Seen around the Club

Would this be a raised track swing bridge, traverser, sector plate or just a point? Please let me know in order to name this section under current construction, appropriately!



New palisades for platform one and two helps improve crowd control. A basic, but great improvement!



Who's doing what?

Leon in process with the new club low bed / disable person truck.



Who's doing what?

Leon's 7 1/4 inch fabricated SAR knuckle couplers

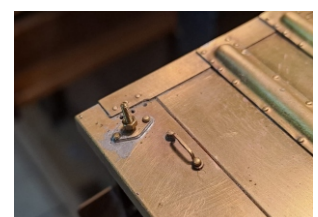
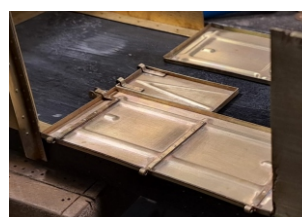
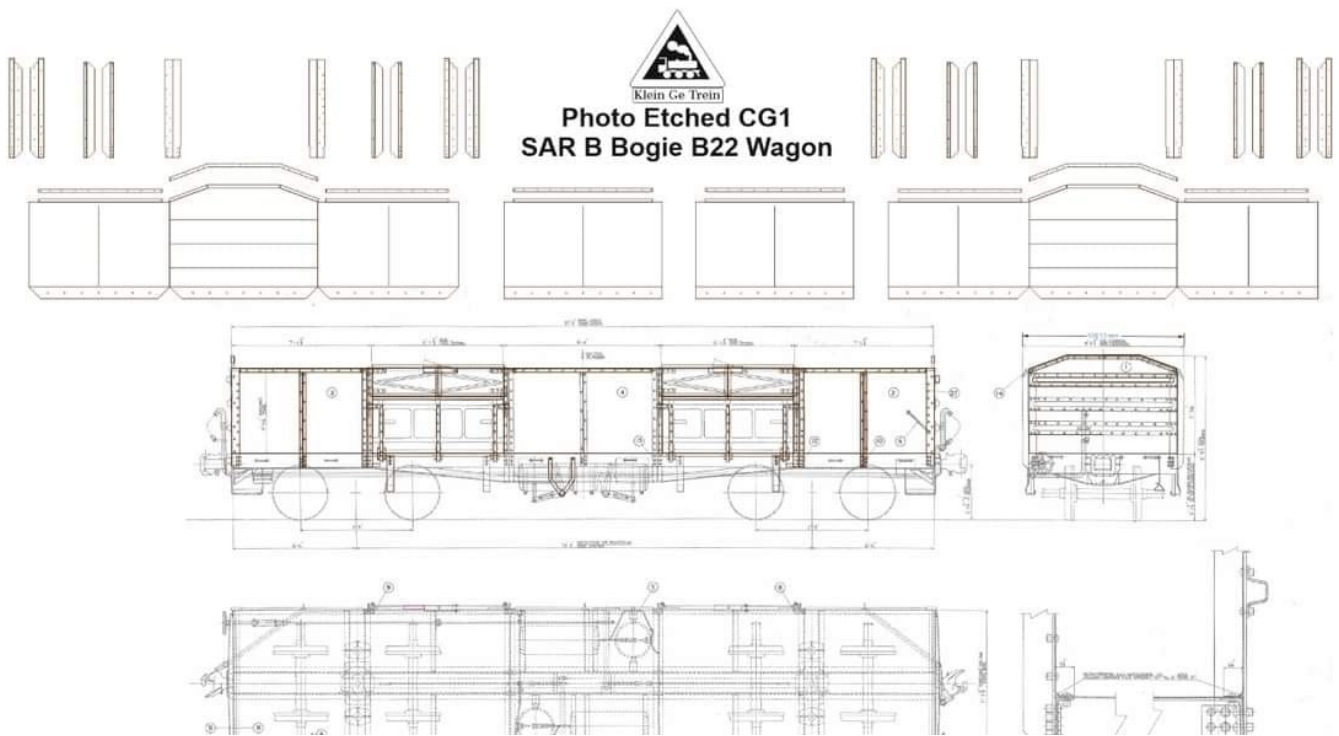


BARRY's front axle sprocket repairs



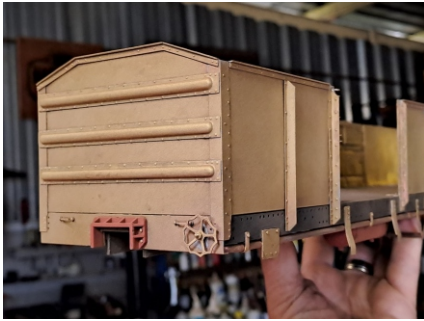
Who's doing what?

The Author's SAR B Bogie Brass wagons in Cape Gauge 1, 1:24 scale



Who's doing what?

The Author's SAR B Bogie Brass wagons in Cape Gauge 1, 1:24 scale



CSME Sell, Swop or Wanted

1 Set of Romulus drawings, brand new never used for sale.

The machine vice as per picture very robust but well made came with a Bridgeport Industrial work bench bolt together, made for the auto industry size 1800mm wide , 720mm deep and 900mm high 30mm superwood top.

All the above open for sensible offers.

Contact Steve Headland by email at headland@global.co.za



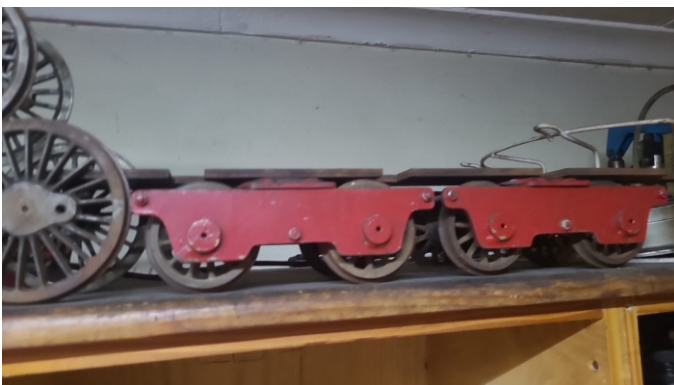
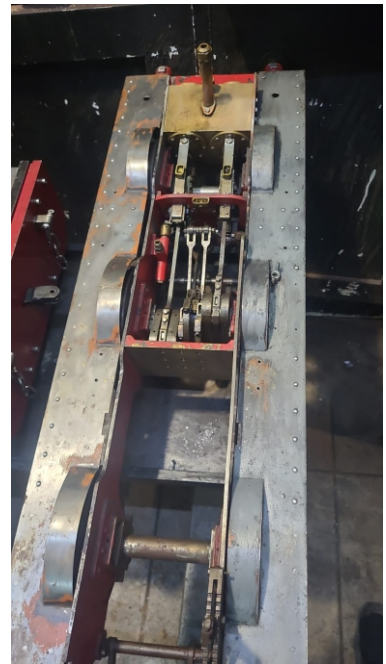
Dividing head
Price: R1,500

Somta nd Onsrud cutters
Open to offers

2 x 3.5" gauge bogies
R500 each

5 inch air running 0-6-0
chassis for sale R7k

Please contact Michael
Eykelhof at 072 107 4988



CSME Sell, Swop or Wanted

This SAR class 10b 757 5" gauge 12th scale is for sale. One of the old JLS locomotives.

Please contact Michael Eykelhof at 072 107 4988



This freelance British 5" gauge peppercorn for sale R35k neg.

Please contact Michael Eykelhof at 072 107 4988

