

# THE CENTURION SMOKEBOX



*"Providing smoking news and steaming interests to members and friends"*

## Centurion Society of Model Engineers

Kwikkie Crescent 999  
Centurion Lake Ext 1  
Zwartkop

 [www.centuriontrains.com](http://www.centuriontrains.com)

 [info@centuriontrains.com](mailto:info@centuriontrains.com)

 **Centurion Society of Model Engineers**  
& Centurion Society of Model Engineers' Supporters Group

---

## CSME NEWSLETTER DECEMBER 2024

---

### COMMITTEE

Chairman - Leon Kamffer	082 577 7813
Vice chair. - John O'Mahony	082 809 3595
Treasurer - Ballot Marx	082 808 5783
Secretary - Norman Reyneke	082 553 7344
Committee - Carel Janse van Rensburg	076 774 9221
Committee - Francois Hanekom	083 448 2639
Committee - Neil Webb	083 243 0701
Committee - Roko Popich	078 401 2927

e-mail: [lkamffer@mweb.co.za](mailto:lkamffer@mweb.co.za)  
e-mail: [omahony236@gmail.com](mailto:omahony236@gmail.com)  
e-mail: [ballotmarx@gmail.com](mailto:ballotmarx@gmail.com)  
e-mail: [admin@centuriontrains.com](mailto:admin@centuriontrains.com)  
e-mail: [kgmodelbouery@gmail.com](mailto:kgmodelbouery@gmail.com)  
e-mail: [c.f.hanekom@gmail.com](mailto:c.f.hanekom@gmail.com)  
e-mail: [neilwebb52@gmail.com](mailto:neilwebb52@gmail.com)  
e-mail: [popichfam@gmail.com](mailto:popichfam@gmail.com)

### Non-committee person contacts

Caretaker - Johan Swanepoel	064 520 8572
Facebook - Norman Reyneke	082 553 7344
Alarm & Website - Norman Reyneke	082 553 7344
Newsletter - Carel Janse van Rensburg	076 774 9221

e-mail: [swanepoel24.js@gmail.com](mailto:swanepoel24.js@gmail.com)  
e-mail: [admin@centuriontrains.com](mailto:admin@centuriontrains.com)  
e-mail: [admin@centuriontrains.com](mailto:admin@centuriontrains.com)  
e-mail: [kgmodelbouery@gmail.com](mailto:kgmodelbouery@gmail.com)

**2024 SUBS: R500 FOR ORDINARY MEMBERS R250 FOR SENIOR MEMBERS AND STUDENTS**

# Official Correspondence & Newsletter

If you read this and are not receiving mail from the CSME you should contact the secretary or editor to update your details. Please ensure we are notified of any change of email address and cell phone number. Those members without email can collect a copy of the newsletter on request from the clubhouse on track day. The news letters are also distributed via the official CSME Whatsapp group.



## Next Club Meetings



**The Committee Meeting is on Saturday, 14 December 2024, the CSME year end function also on 14 December 2024. 15 December 2024 the club running day, with 16 December 2024 the last public running day for the year. First public running day for 2025 is on 5 January.**

Members are welcome any other time by arrangement with Swannie 064 520 8572. The gates are operational by cell phone for members. Members, please contact Norman Reyneke to be added to the gate motor list.

## Chairman's Chatter



Another amazing year at the CSME, with consistent public attendance and a group of drivers that every week cannot get enough of playing trains. We really salute you.

We saw quite a few successful camping weekends, work parties and some amazing progress on our raised track and other projects. Thanks to every member that helped, every small bit together makes an amazing end result.

We definitely plan to host a well deserved year end braai and playing with trains day on Saturday the 14th. We all look forward to see you there.

Leon



## Secretary's Bit

So, we come to the end of another year and a very successful year at that. We wish all our members a very pleasant, restful and safe Holiday Season. If you are travelling, please reach your destinations safely and have a safe return. We look forward to seeing you all at the club on a regular basis next year. We will be closing down after the 16<sup>th</sup> of December and will re-open to the public on Sunday 5 January 2025

Merry Christmas and a Happy New Year to all.

This month we wish Shawn Spaan, Niel Webb, Alan Green and Neels Barnard. many more years of trains and good health.

Norman



## From the Editor

Thank you very much for all the contributions to this edition on **THE CENTURION SMOKE BOX.**

A very interesting workshop visit to Derek Rausch's Rausch Engineering in Bashewa, Pretoria East. Thank you Roko! Roko is planing some great visits in 2025, please support these fantastic club activities.

Looking forward to this Saturday's club year end function to close off a great year for the club. See you at MEERPARK Station on Saturday.

Have a great year end in general, enjoy the festive season, be save and see all in the new year at our hobby's happy place, MEERPARK Station!

If you have any parts, projects, tools, material or running engines you would wish to sell, get the out consider advertising in our **SELL/SWOP/WANTED** section in 2025!

Carel



## **The CSME year end function Saturday, 14 December 2024.**

Members may enjoy club facilities from early, camping as per tradition, family, specially young members and unlicensed members play with private and club locos.

**Morning tea & cake at 11:00**

**Father Christmas handing out presents at 12:00**

**Followed by the year end speech by our chairman, and prize giving.**

**Lamb on the spit, pap, bread rolls and gravy served at 14:00  
(please bring your own salads)**

**Ice cream for all!**

**Late afternoon and evening train run to late.**

**(members must confirmed attendance numbers with Norman  
Reyneke at 082 553 7344)**

Sunday 15 December 2024 will be open to the public, with Monday 16 December also open to the public and or last running day for the year.

Please bring your own cutlery, including plates as well as drinks.

Coffee, tea and milk will be available as per usual.

See everyone at Meerpark Station

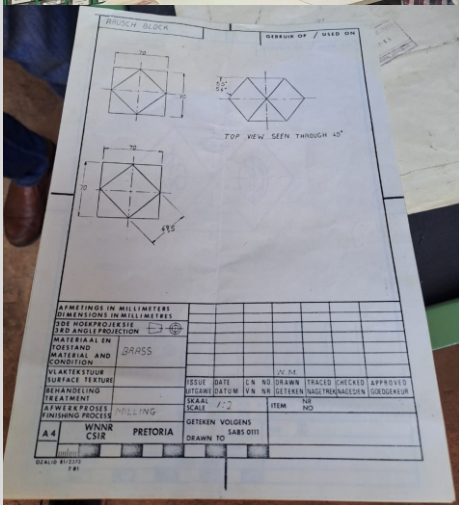




# CSME Workshop visit to Rausch Engineering

The SA-CNC club and CSME visited Derek Rausch at his Rausch Engineering workshop. Derek Rausch qualified as an Instrument Maker through the Council for Scientific and Industrial Research. Once qualified, he established Rausch Engineering in October 1983. They manufacture various quality components and tooling such as belt sanders and contact wheels, required in the knife making industry. Derek designs and manufactures items such as pivots screws, drilling and tapping gigs, interscrews and thumb studs plus stunning high end knives, machined from solid steel starting in the manual machining workshop and then in the CNC workshop.

A great workshop visit! Thank you very much Roko for your part in organising this club event, plus arranging and making the fire for a lekker braai.





## CSME Workshop visit to Rausch Engineering





## CSME Workshop visit to Rausch Engineering



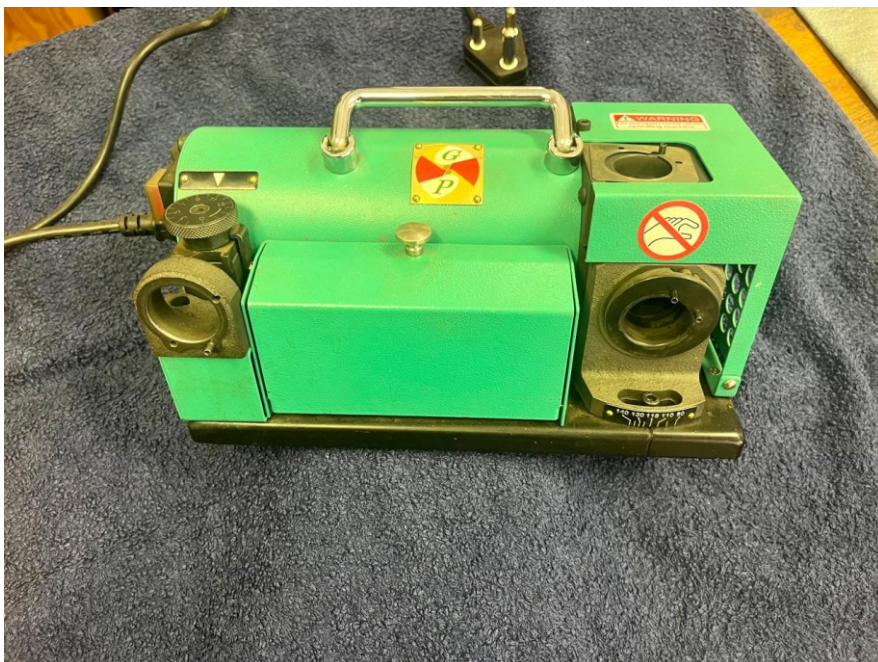


## CSME Workshop visit to Rausch Engineering

A few guys asked about Derek Rausch's FEW 2mm to 13mm drill sharpener/grinder seen during the workshop visit.

Roko spoke to him and he is giving club members a special price of R16,500 (list price is R22,300). Stock is available.

Please contact Roko if interested.

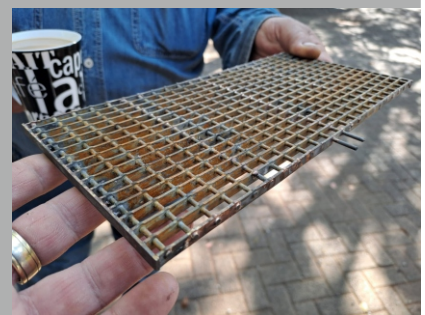
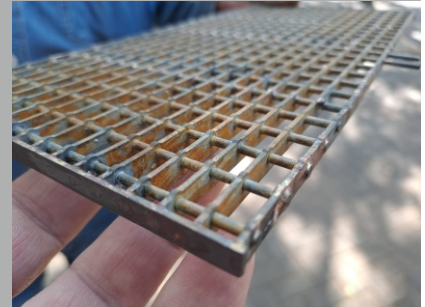
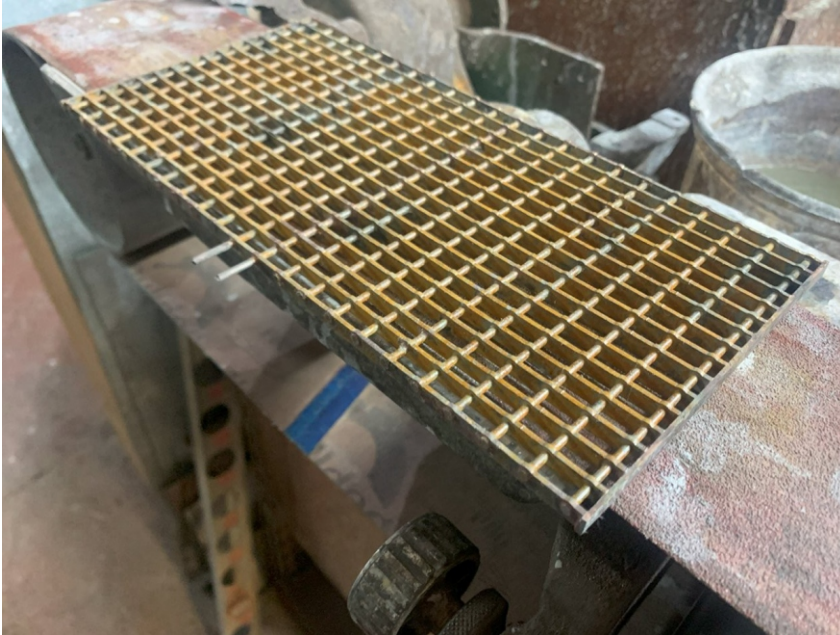




# Who's doing what?

## From Leon's workshop:

Miniature Mentis grating, on the left, it looks like 1:1 real grate, on the right, one only gets the true scale due to the hands around it!



A splash tray for small CNC mill



A small vertical slide for milling in the lathe



2 of the pivots for the raised track traverser at the steaming bay





## Who's doing what?



Simon busy with his 5 inch SAR guards van as well as some DZ7s. Chassis, wheels and bogies by Leon Cloete in PE.





## Who's doing what?

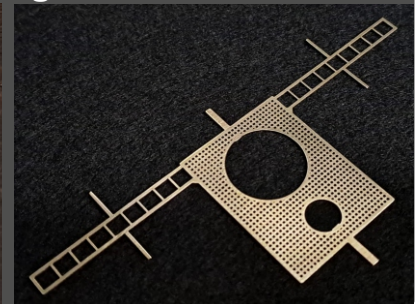
The author with some chemically milled brass parts.



A full set of 1:12 scale 3 1/2 inch 15F jewelry.



HO scale, 1:87 Rhodesian Railway loco plates, and grid with ladders.



Brass stencils for Simon's 5 inch, 1:8,4 scale SAR Guards Van and DZ7s





## CSME Members' "oops" moments!~

While this happened, it was like black magic! Me and Neil were on driving duty last Sunday, me on the Garratt and Neil on the class 5 KAROO. After about two hours into the drive, I lost my rhythm (and trying to run a thin fire with our new batch of coal. Excellent coal, but smaller than we are used to). So I lost my fire, in the station! Drivers will know the look on every one's faces when you look back, and hope that no one boarded yet because you sit with an issue, but the eager looking faces of the fully loaded train are like: When are we leaving the station? Luckily for me, Neil was in the pit next to me, and I asked him if he can spare me some burning coal. No problem, the first load came over, then the second, and I asked for one more. And here is the black magic; when he pulled out the shovel from the firebox, the front part disappeared, in a matter of seconds, gone! So he looked into the fire box, gone! We did find it, in a different configuration, but we did find it! We figured out what happened, as one of us is a metallurgist! First, we questioned the maker of the shovel's ability to properly silver solder the shovel together (hehe, sorry Leon)! But we realised when the temperature reached +/- 680 deg C, the silver solder came loose and the part stayed behind in the fire, then very quickly reached 950 deg C, which made it magically drip through the grid onto the ash below the firebox. Pictures as proof:



The modified brass above could not be changed back into a shovel, so I had to make a new one!